

Connect+™ Series

Models: MSF1 /MSF2 /MSF3 /1W20

New Software Update

New Software Update

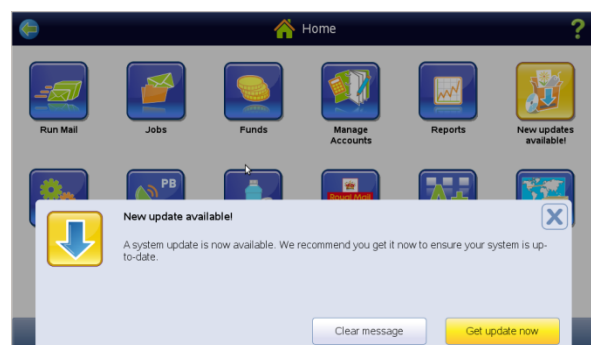
Your Connect+ system needs to be updated with the latest software to make your machine Mailmark compliant. You will need to follow these steps to download and install the updates to your machine. The new software will become available to download from 21.3.2014.

Before you start the software download:

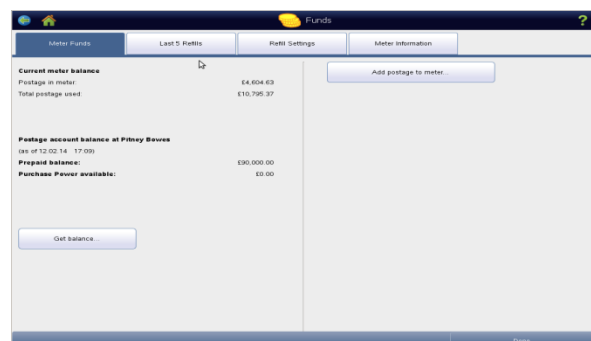
- Your system must be powered on.
- Your system must be connected to the network.
- This update will take around 1 to 1.5 Hours to complete.
- Buttons may be arranged slightly differently than shown here depending on your system.
- Please **DO NOT** unplug your power cord, press the power button or disconnect the machine from the network during these steps. This may cause serious damage to your machine.
- Please **DO NOT** open any covers during this process.

If you have just switched your machine on, you may see the screen as shown. Press Clear message to this and any other messages shown.

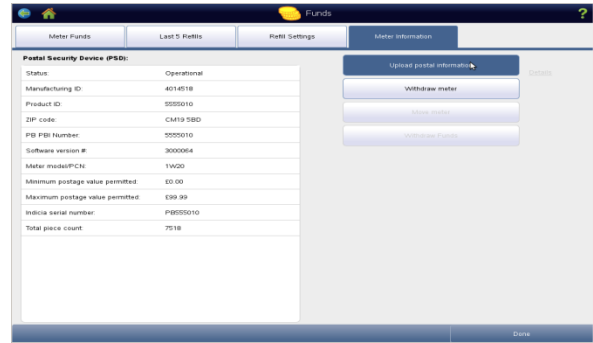
Press the **'Funds'** icon.



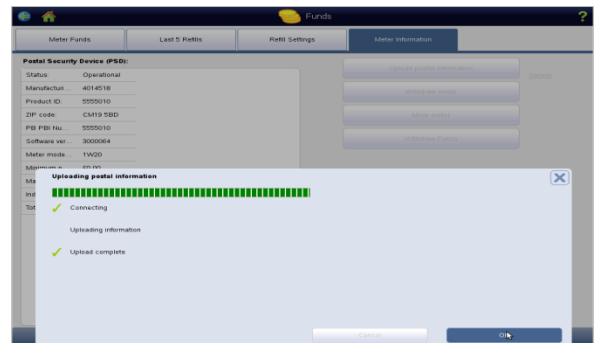
Press the **'Meter Information'** Tab.



Then press **'Upload postal information'** button.



Once this is complete, press **'O.K'** and then **'Done'** to return to the home screen.



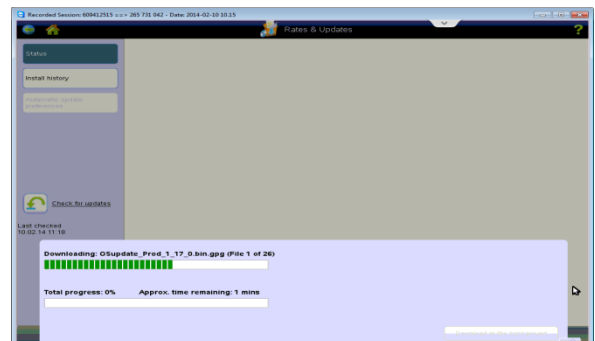
Step 1 (Approx 20Mins)

There are several ways to access the updates.

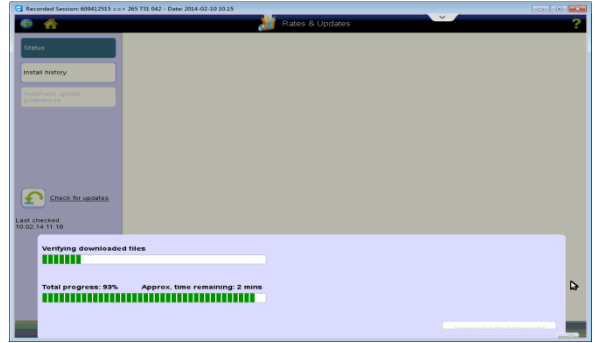
Press either the **'New updates available!'** icon, or the **'Rates and Updates'** icon if this is not present.



Your Connect+ system will connect and start downloading the available update.



The system will then verify the downloaded files.



Step 2 (Approx. 25mins)

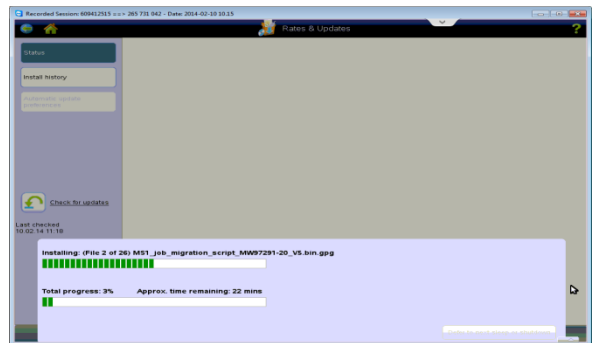
At the install updates and restart system now? screen, press the **'Install and restart now'** button.

Important! – Do not press Auto install at next sleep or shutdown



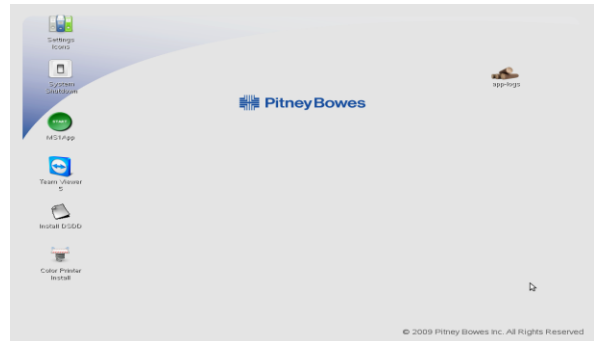
The system will install the updates.

Once the installation is complete the system will automatically shut the machine down.



Step 3 (approx. 15mins)

Restart the machine.
 During the power up sequence you may see the screen shown for approx. 1 minute. This is correct, and normal power up screens will follow.

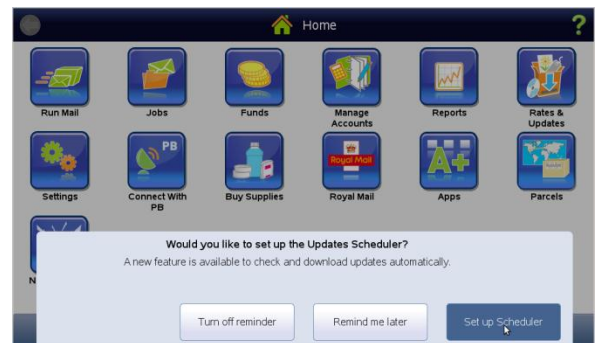


AT the home screen. Press **'Clear Message'** to any errors displayed



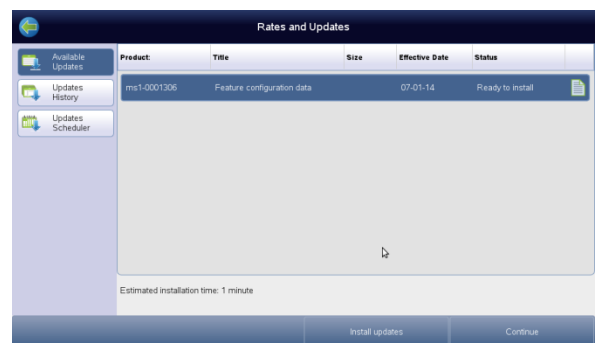
You may also see the following message regarding setting up the Updates Scheduler. Press **'Remind me later'**. This can be set up after the installation and will be explained in more detail after the software update is complete.

Press the **'Rates and Updates'** Icon.

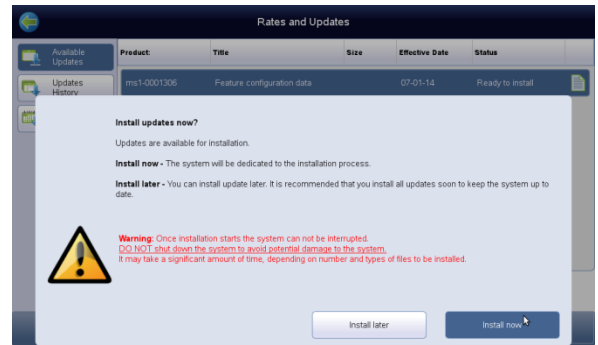


Your Connect+ system will again connect and retrieve any additional features.

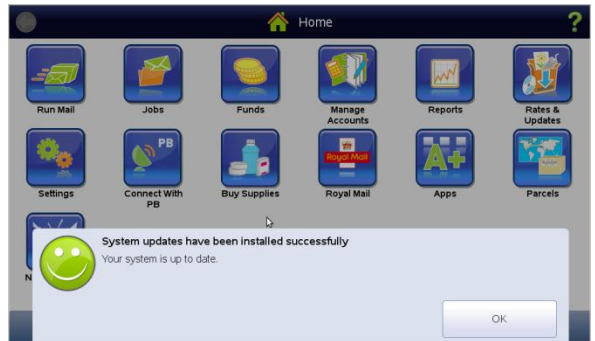
A feature of the new software is that you will also need to install any files that are downloaded. Press the **'Install Updates'** button to install your configuration data to the system.



Press the **'Install Now'** button.



Once the file is installed you will see the **'System updates have been installed successfully'** message. Press **'OK'**.

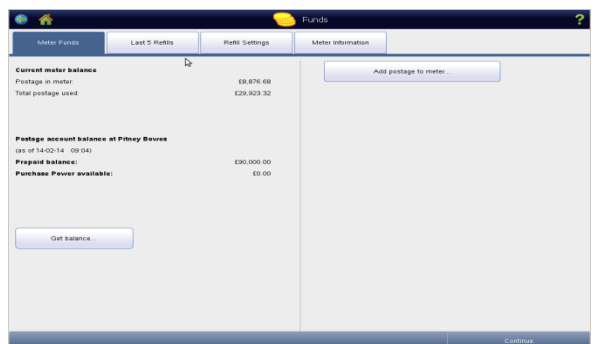


From the home screen you now need to complete a balance enquiry. This will download an update to clear the missing parameter message you saw earlier.

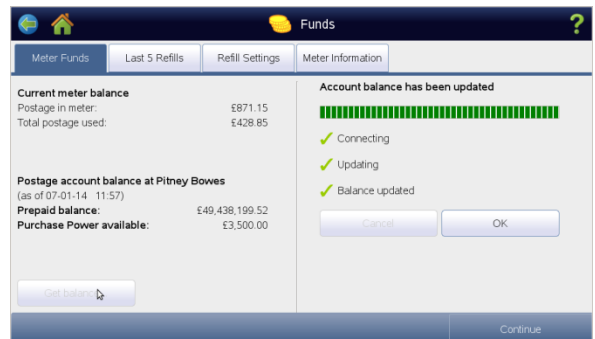
Press the **'Funds'** icon.



Then press **'Get Balance'**.



When the balance enquiry is complete, press the **'OK'** button and then the **'Continue'** button to return to the Home Screen.



Important! Finally complete a full shut down and repower of your Connect+ system for all the updates to fully install.



Using the Rates and Update Scheduler

Your system can be set up to check for and download rates and software updates automatically at a specific time each day. A series of update status icons will appear in the toolbar at the top of the screen when updates become available.

IMPORTANT: You must install the rates and software updates once they are downloaded.

Turning the Scheduler on for the First Time

To turn the scheduler on:

NOTE: Once you turn the update scheduler on it cannot be turned off.

On machine power up you may get a message-

1. Select **Set up Scheduler** when prompted,

OR

Select **Rates and Updates** on the Home screen and then select **Updates Scheduler**.

2. Enter the time of day you want the system to check for rates and updates.
3. Select the appropriate update option:
Automatically check and download updates, or Only check for updates.
4. Select **Save Scheduler** to save your changes.
5. Press back key to return to the **Home Screen**.

Changing the Scheduler Settings

1. Select **Rates and Updates** on the Home screen and then select **Updates Scheduler**.
2. Follow steps 2-5, above, to change the scheduler settings.